

Pressure Control Panels

FSR-1 Series Pressure Control Panels

Features

- ⦿ With a FCR-1 Series Regulator
- ⦿ With vent valves to relieve residual pressure quickly, easy and safe to remove and replace gas source
- ⦿ With special cleaning and packaging, applicable to oxygen-enriched atmospheres

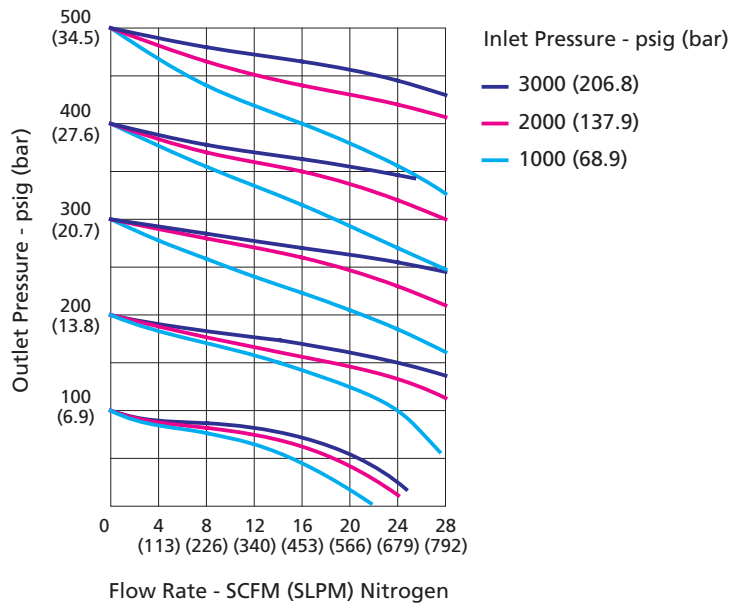
Technical Data

- ⦿ Maximum inlet pressure: 3000 or 4500 psig
- ⦿ Outlet pressure range: 0 ~ 25, 0 ~ 50, 0 ~ 100, 0 ~ 250 or 0 ~ 500 psig
- ⦿ Material of the main components:
 - Seat: PCTFE (regulator and diaphragm valve)
 - Diaphragm: Hastelloy (regulator), cobalt alloy (diaphragm valve)
 - Diaphragm valve body: 316L
 - Filter: 316L
- ⦿ Temperature: -10 °F ~ 150 °F (-23 °C ~ 65 °C)
- ⦿ Valve leak rates (helium):
 - Internal: $\leq 1 \times 10^{-7}$ std cm³/s
 - External: $\leq 1 \times 10^{-9}$ std cm³/s
- ⦿ Flow coefficient (regulator Cv): 0.06

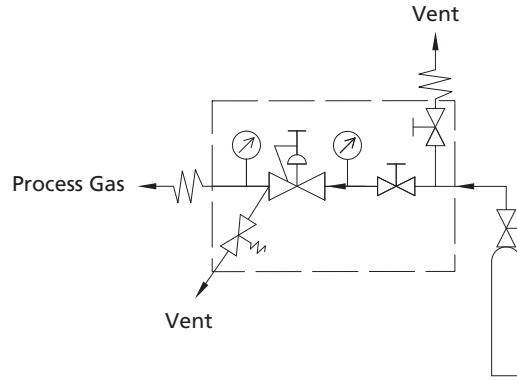


Model: FSR-16L-45-100-00-B-B-00-R-P

Typical Flow Chart

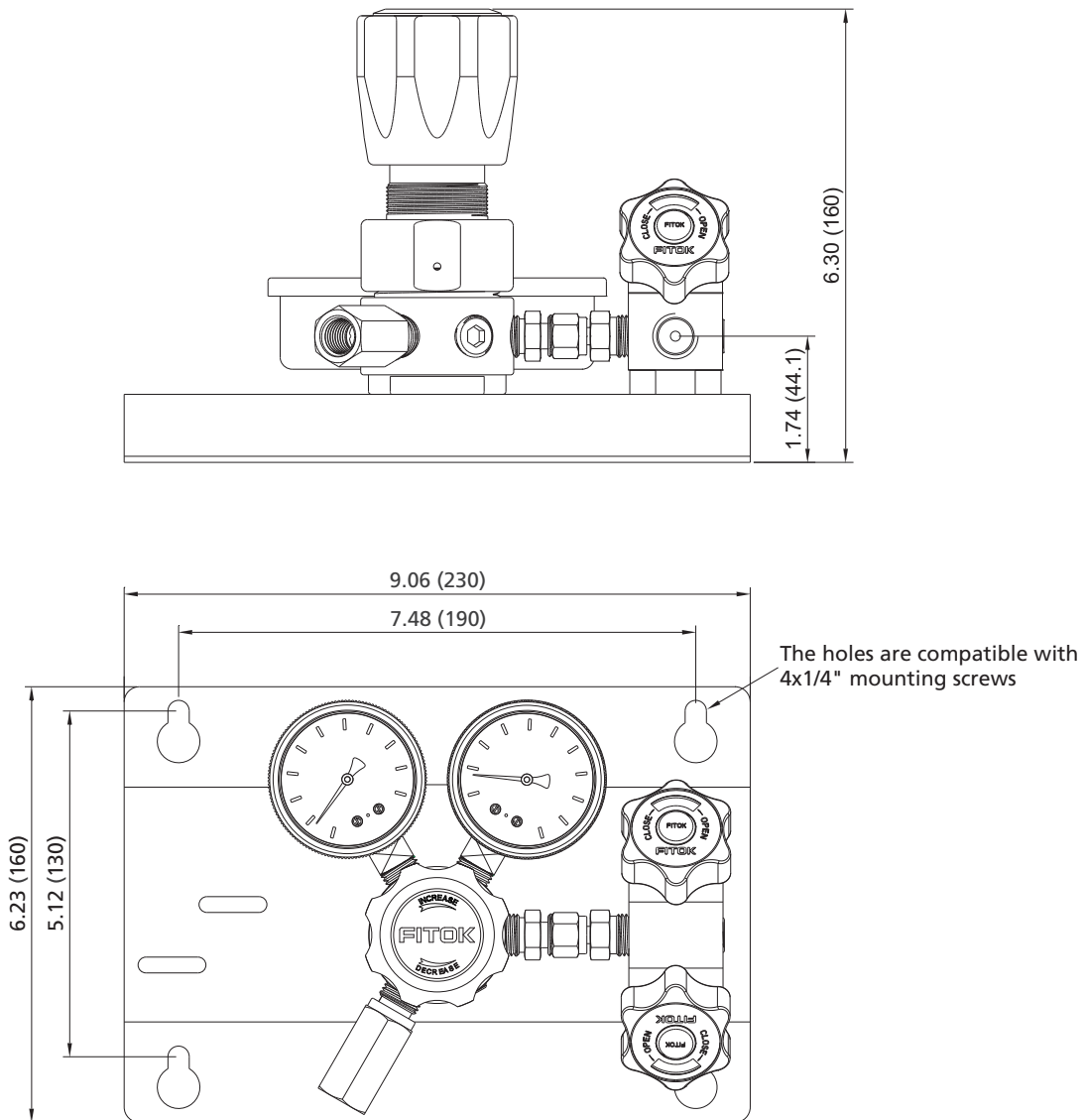


Flow Schematic

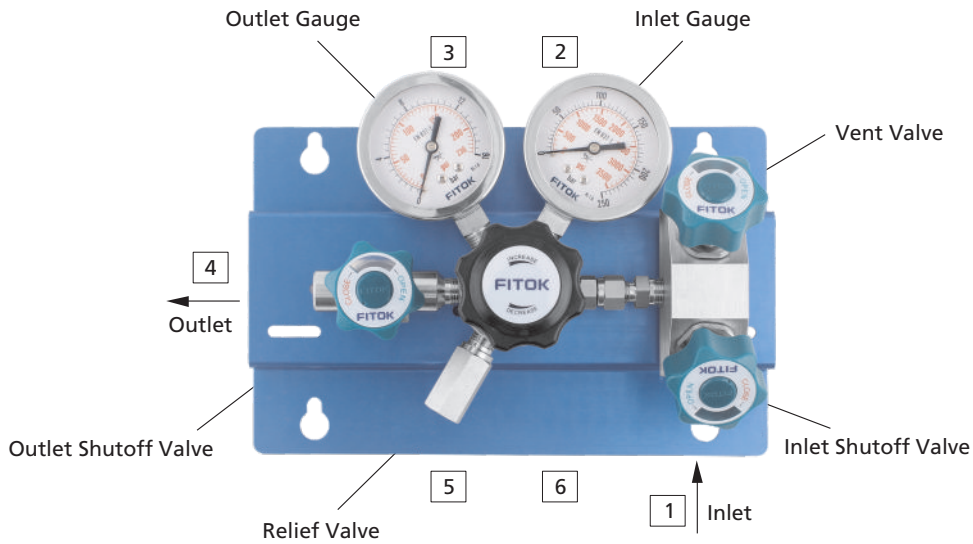


Dimensions

Dimensions, in inches (millimeters), are for reference only.



Components Introduction



Ordering Number Description

FSR - 16L - 30 - 50 - 00 - B - B - 30 - R - P

Body Material (Regulator)		Connection 1		Connection 2		Connection 4		Connection 5			
6L	316L SS	00	1/4" Female NPT	B	With Gauge (psi/bar)	00	1/4" Female NPT	R	Relief Valve		
SS	316 SS	01	1/4" Male NPT	M	With Gauge (psi/MPa)	01	1/4" Male NPT	P	Plug		
HC	Hastelloy C-276	10	1/4" Tube Fitting	P	Plug	10	1/4" Tube Fitting	00	1/4" Female NPT		
B	Brass (Nickel-plated)	11	3/8" Tube Fitting	00	1/4" Female NPT	11	3/8" Tube Fitting	Connection 6 Same as Connection 5			
		20	6 mm Tube Fitting	Connection 3 Same as Connection 2		20	6 mm Tube Fitting				
Inlet Pressure P1		21	8 mm Tube Fitting			21	8 mm Tube Fitting				
30	3000 psig	Other connections are available upon request				30	Diaphragm Valve with 1/4" Female NPT				
45	4500 psig			31	Diaphragm Valve with 1/4" Male NPT			31	Diaphragm Valve with 1/4" Male NPT		
				32	Diaphragm Valve with 1/4" Tube Fitting			32	Diaphragm Valve with 1/4" Tube Fitting		
				33	Diaphragm Valve with 3/8" Tube Fitting			33	Diaphragm Valve with 3/8" Tube Fitting		
				34	Diaphragm Valve with 6 mm Tube Fitting			34	Diaphragm Valve with 6 mm Tube Fitting		
Outlet Pressure Range P2		25	0~25 psig			35	Diaphragm Valve with 8 mm Tube Fitting				
50	0~50 psig					Other connections are available upon request					
100	0~100 psig										
250	0~250 psig										
500	0~500 psig										

Notes:

1. "Ordering Number Description" is a reference to understand the combination rules of FITOK product part number. Not all combinations are available.
2. Before ordering, please read **User's Guide** on A-11.

Pressure Control Panels

FSR-2 Series Pressure Control Panels

Features

- ⦿ With a FCR-2 Series Regulator
- ⦿ With vent valves to relieve residual pressure quickly, easy and safe to remove and replace gas source
- ⦿ With special cleaning and packaging, applicable to oxygen-enriched atmospheres

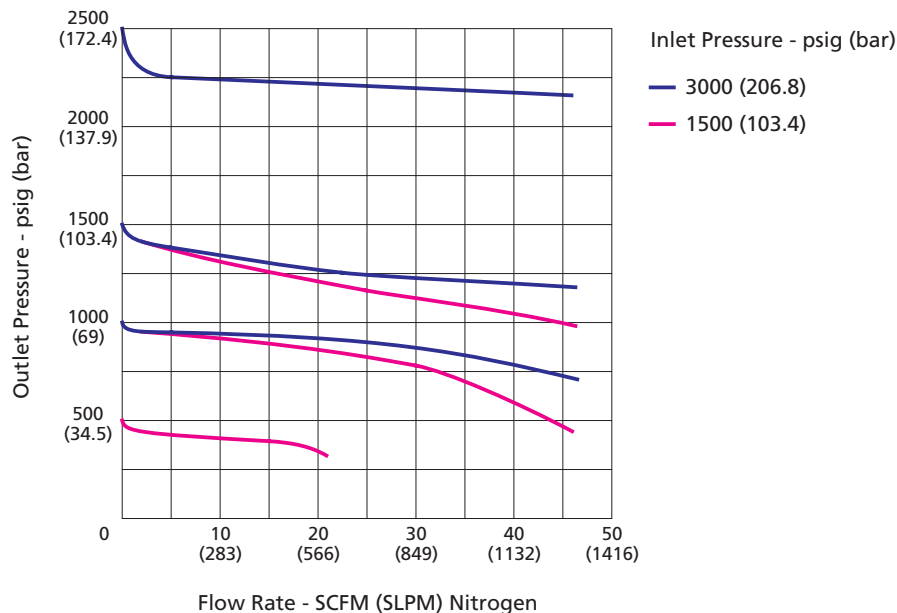
Technical Data

- ⦿ Maximum inlet pressure: 3000 or 4500 psig
- ⦿ Outlet pressure range: 0 ~ 750, 0 ~ 1500 or 0 ~ 2500 psig
- ⦿ Material of the internal components:
Without venting Model: Main seat PCTFE
Venting Model: Main seat PEEK, vent seat PCTFE
Vent seat: PCTFE
Piston: 316L
O-ring: FKM or FFKM
Filter: 316L
- ⦿ Temperature: -10 °F ~ 150 °F (-23 °C ~ 65 °C)
- ⦿ Leak rates:
Internal: Bubble-tight
External: Bubble-tight
- ⦿ Flow coefficient (regulator Cv):
Without vent: 0.06
With vent: 0.1

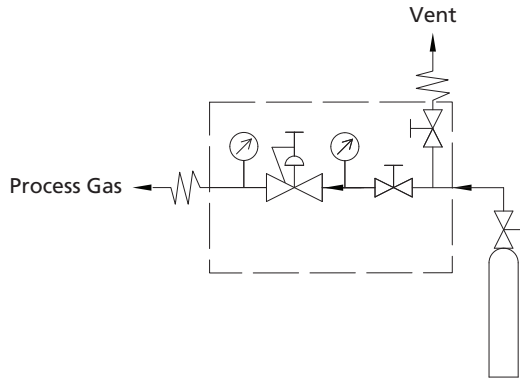


Model: FSR-2Z6L-45-750-00-B-B-00-P-P

Typical Flow Chart

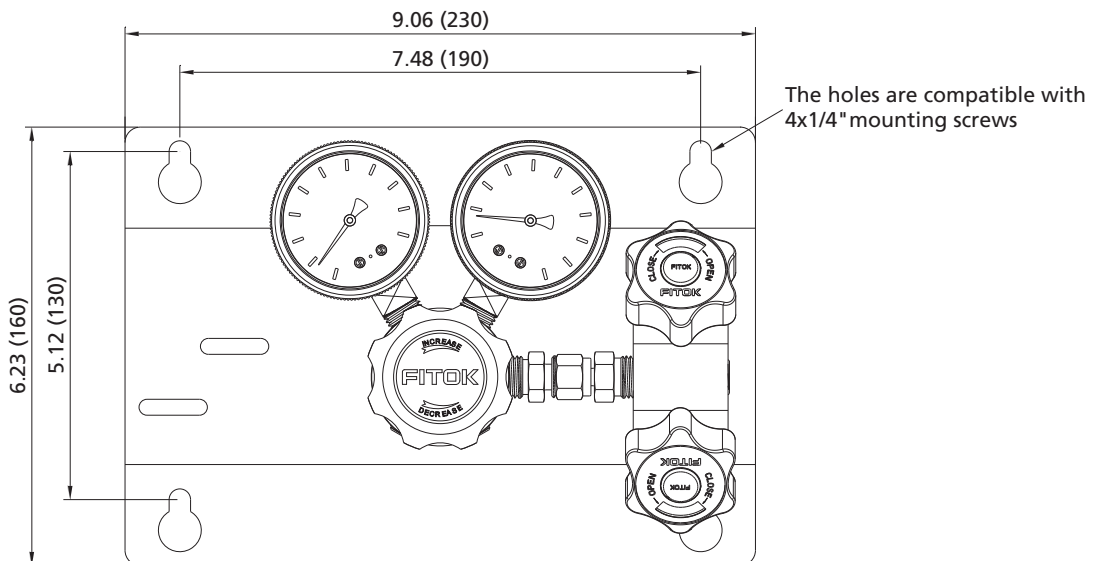
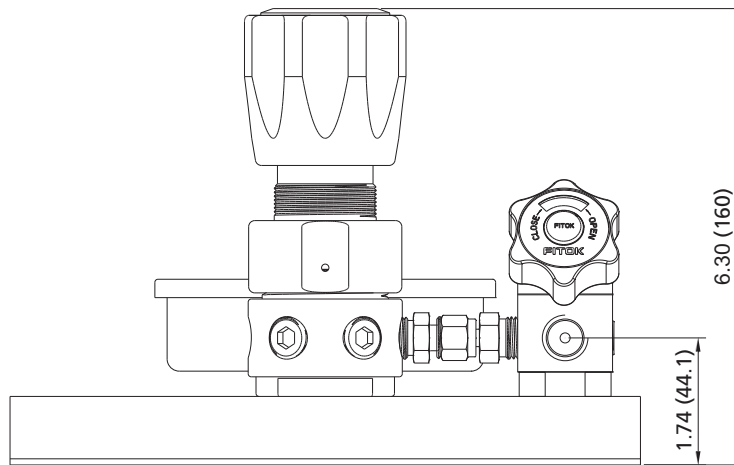


Flow Schematic

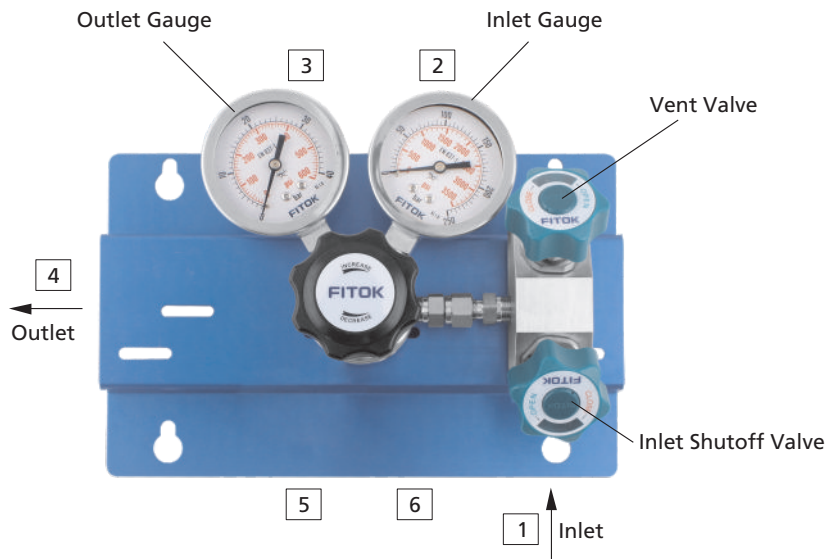


Dimensions

Dimensions, in inches (millimeters), are for reference only.



Components Introduction



Ordering Number Description

Vent Option		Inlet Pressure P1		Connection 1		Connection 2		Connection 4		Connection 5	
Without		30	3000 psig	00	1/4" Female NPT	B	With Gauge (psi/bar)	00	1/4" Female NPT	R	Relief Valve
V	With	45	4500 psig	01	1/4" Male NPT	M	With Gauge (psi/MPa)	01	1/4" Male NPT	P	Plug
O-ring Material		Outlet Pressure Range P2		10	1/4" Tube Fitting	P	Plug	10	1/4" Tube Fitting	00	1/4" Female NPT
FKM		750	0~750 psig	11	3/8" Tube Fitting	00	1/4" Female NPT	11	3/8" Tube Fitting	Connection 6	
Z	FFKM	1500	0~1500 psig	20	6 mm Tube Fitting	Connection 3		20	6 mm Tube Fitting	Same as Connection 5	
Body Material (Regulator)		2500	0~2500 psig	21	8 mm Tube Fitting	Same as Connection 2		21	8 mm Tube Fitting		
6L	316L SS			Other connections are available upon request				30	Diaphragm Valve with 1/4" Female NPT		
SS	316 SS							31	Diaphragm Valve with 1/4" Male NPT		
B	Brass (Nickel-plated)							32	Diaphragm Valve with 1/4" Tube Fitting		
								33	Diaphragm Valve with 3/8" Tube Fitting		
								34	Diaphragm Valve with 6 mm Tube Fitting		
								35	Diaphragm Valve with 8 mm Tube Fitting		
								Other connections are available upon request			

Notes:

1. "Ordering Number Description" is a reference to understand the combination rules of FITOK product part number. Not all combinations are available.
2. Before ordering, please read **User's Guide** on A-11.