

VPR Series Steam Heated Vaporizing Pressure Regulator

Features

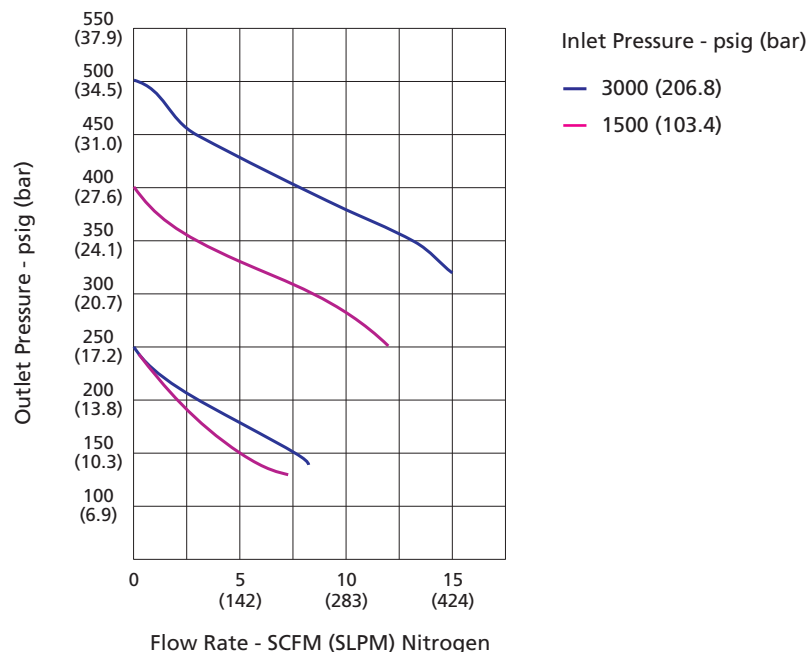
- ⦿ 316L SS or Alloy 400 body optional
- ⦿ Low internal volume
- ⦿ Convolved diaphragm design to improve regulation precision and cycle life
- ⦿ Good thermal conductivity saves energy and cost
- ⦿ With special cleaning and packaging, applicable to oxygen-enriched environments

Technical Data

- ⦿ Maximum inlet pressure: 3600 psig (248.2 bar)
- ⦿ Outlet pressure range: 0~25 psig (0~1.7 bar), 0~50 psig (0~3.4 bar), 0~100 psig (0~6.9 bar), 0~250 psig (0~17.2 bar), 0~500 psig (0~34.5 bar)
- ⦿ Materials of the internal components:
 - Body: 316L SS or Alloy 400
 - Seat: VESPEL
 - Diaphragm: Hastelloy
 - Poppet spring: Alloy X-750
 - Lift poppet: Hastelloy
- ⦿ Maximum vapor pressure and temperature: 600 psig (41 bar) and 500°F (260°C)
- ⦿ Medium working temperature: -40°F~+500°F (-40°C~+260°C)
- ⦿ Leak rates (helium):
 - Internal $\leq 1 \times 10^{-7}$ std cm³/s
 - External $\leq 1 \times 10^{-7}$ std cm³/s
- ⦿ Flow coefficient (Cv): 0.06
- ⦿ Weight: ≈ 5.5 lbs (2.5 Kg)
- ⦿ Standard Connections: 1/4" female NPT for inlet and outlet port, 3/8" female NPT steam supply connections

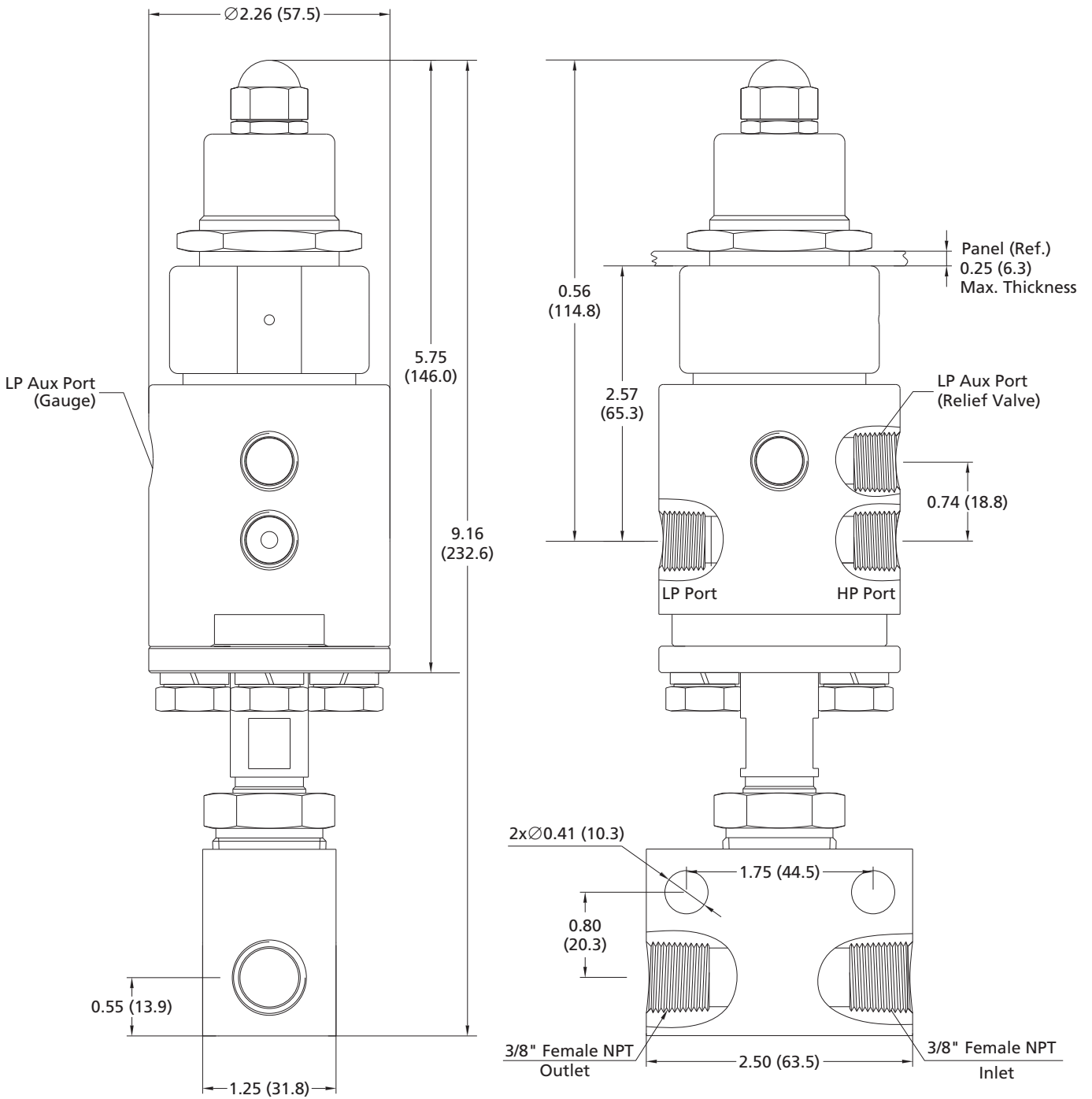


Typical Flow Chart

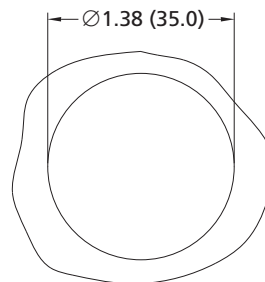


Dimensions

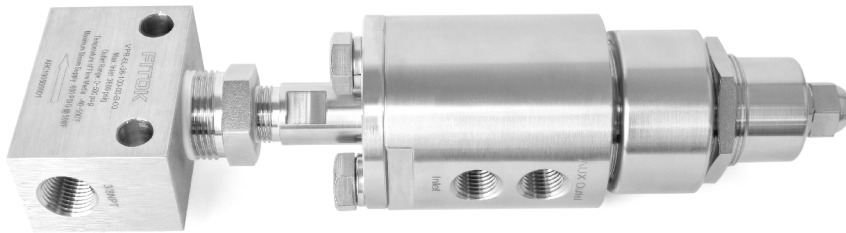
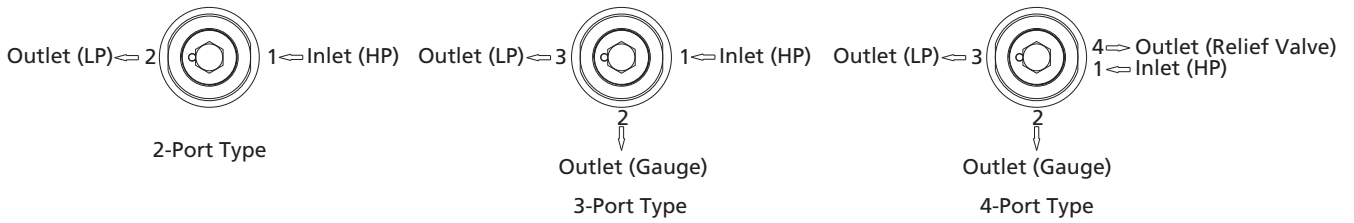
Dimensions, in inches (millimeters), are for reference only.



Panel Cut-out



Port Configuration



Part Number Description

VPR - M - 36 - 100 - 00 - 00 - B - R

Body Material		Inlet Pressure P1 psig (bar)		Connection 1		Connection 2		Connection 3		Connection 4	
6L	316L SS	36	3600 (248.2)	00	1/4" Female NPT	B	With Gauge (psi/bar)	Same as Connection 1		Same as Connection 2	
M	Alloy 400	Outlet Pressure Range P2 psig (bar)		01	1/4" Male NPT	M	With Gauge (psi/MPa)				
		25	0~25 (0~1.7)	10	1/4" Tube Fitting	R	Relief Valve				
		50	0~50 (0~3.4)	11	3/8" Tube Fitting	P	Plug				
		100	0~100 (0~6.9)	20	6 mm Tube Fitting	00	1/4" Female NPT				
		250	0~250 (0~17.2)	21	8 mm Tube Fitting	01	1/4" Male NPT				
		500	0~500 (0~34.5)	Other connections are available upon request		10	1/4" Tube Fitting				
						11	3/8" Tube Fitting				
						20	6 mm Tube Fitting				
						21	8 mm Tube Fitting				
						Other connections are available upon request					

Notes:

“Ordering Number Description” is a reference to understand the combination rules of FITOK product part number. Not all combinations are available.

Examples of part number:

- a. 2-port type (1 in, 1 out): VPR-6L-36-50-00-00
- b. 3-port type (1 in, 2 out): VPR-6L-36-100-00-B-00
- c. 4-port type (1 in, 3 out): VPR-6L-36-250-00-B-00-R